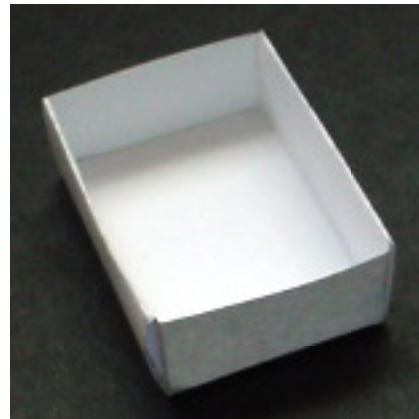
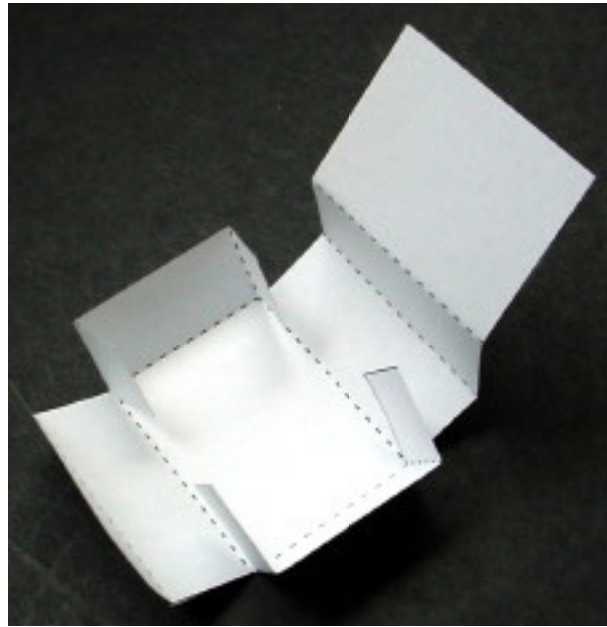


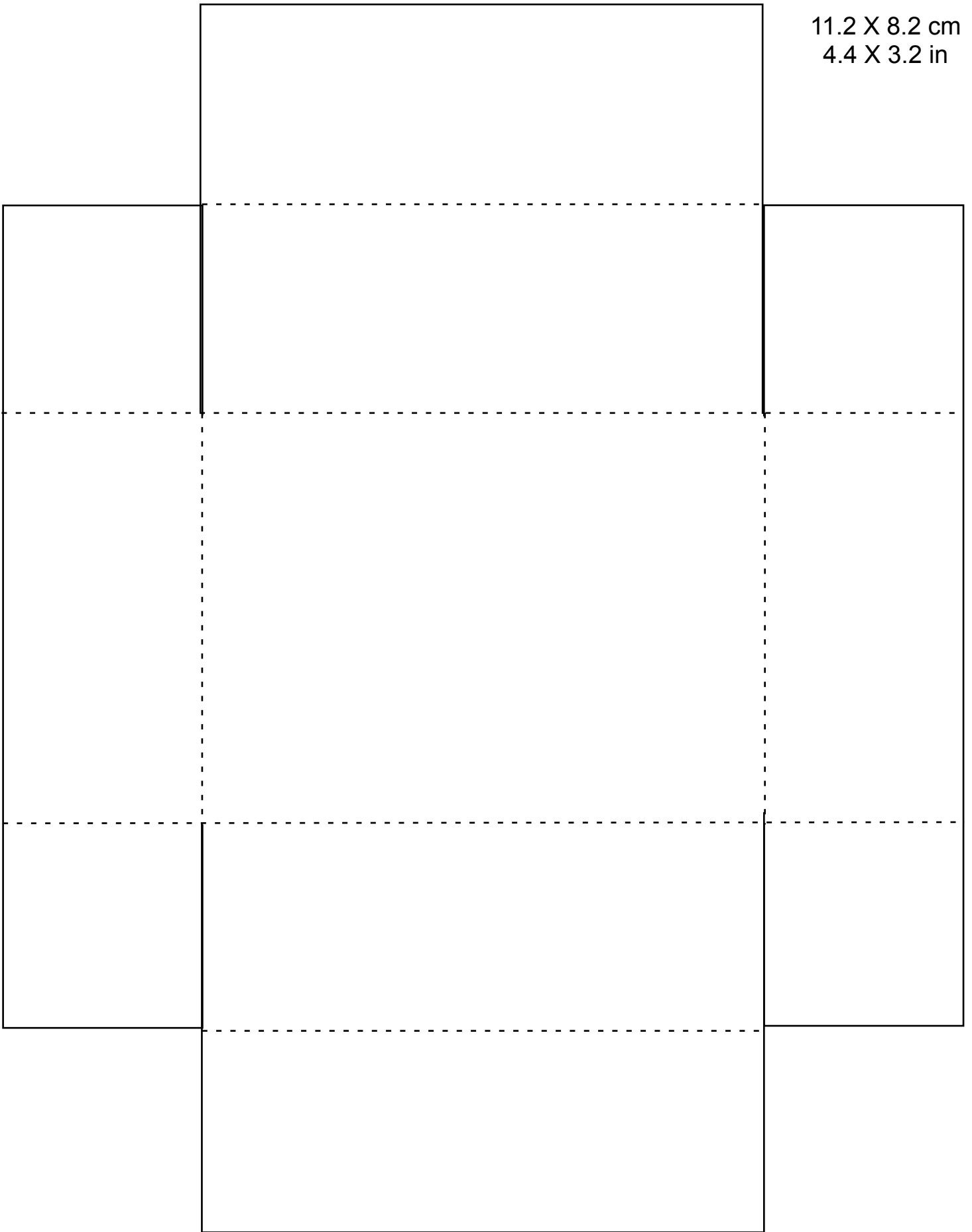
Specimen Display Boxes

These boxes are handy for displaying items for sale at a gem & mineral or fossil show.

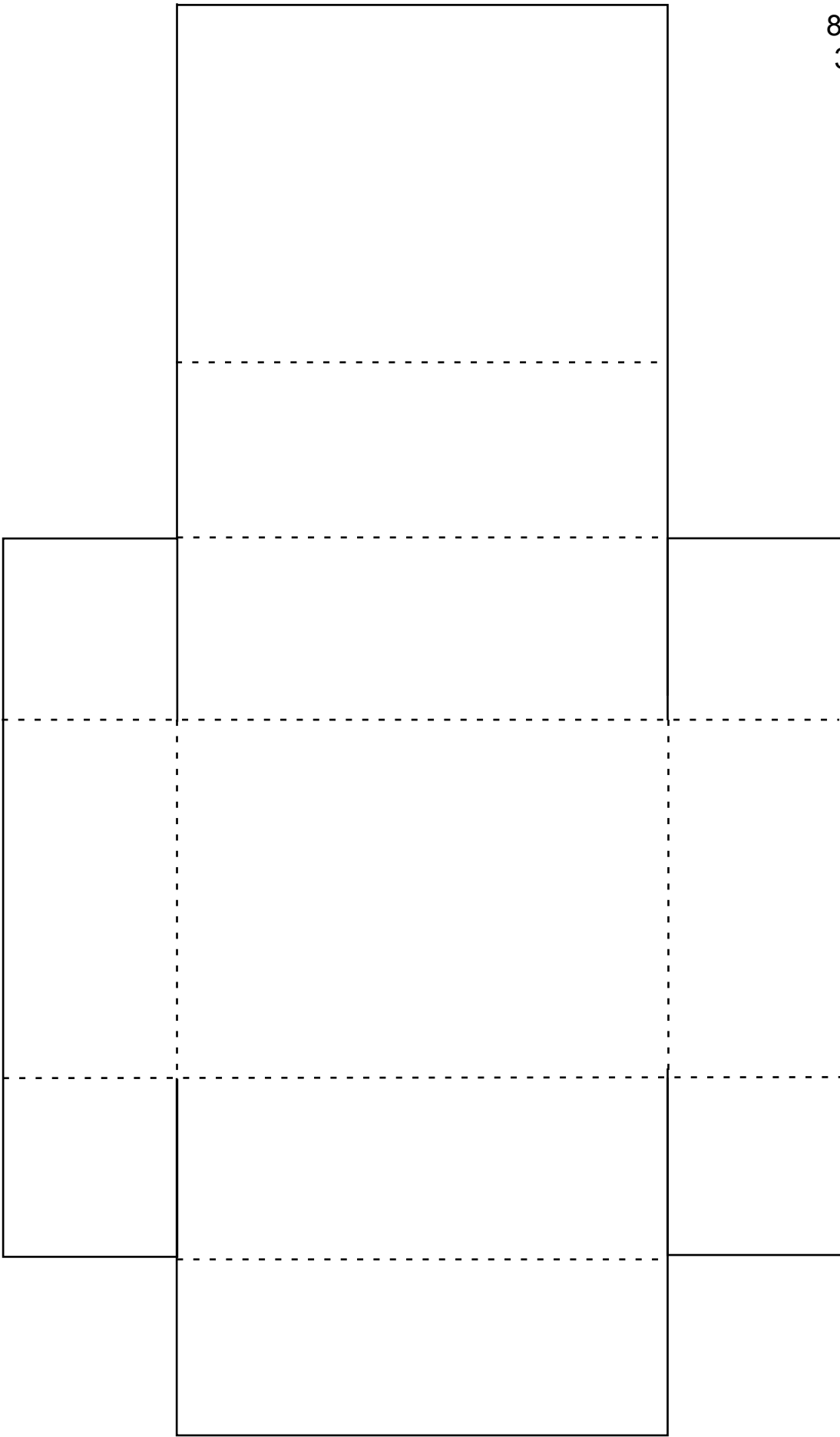
- Choose a size from pages 2-5, and print the desired number of copies of that **ONE** page on heavy paper, such as heavyweight matte paper—but don't exceed the paper weight of your printer.
- Cut along the solid lines and fold along the dotted lines, as illustrated below.
- See page 6 for labels and their instructions. The label merely sits upright behind the specimen; the flap you see in these photos forms the bottom of the box.



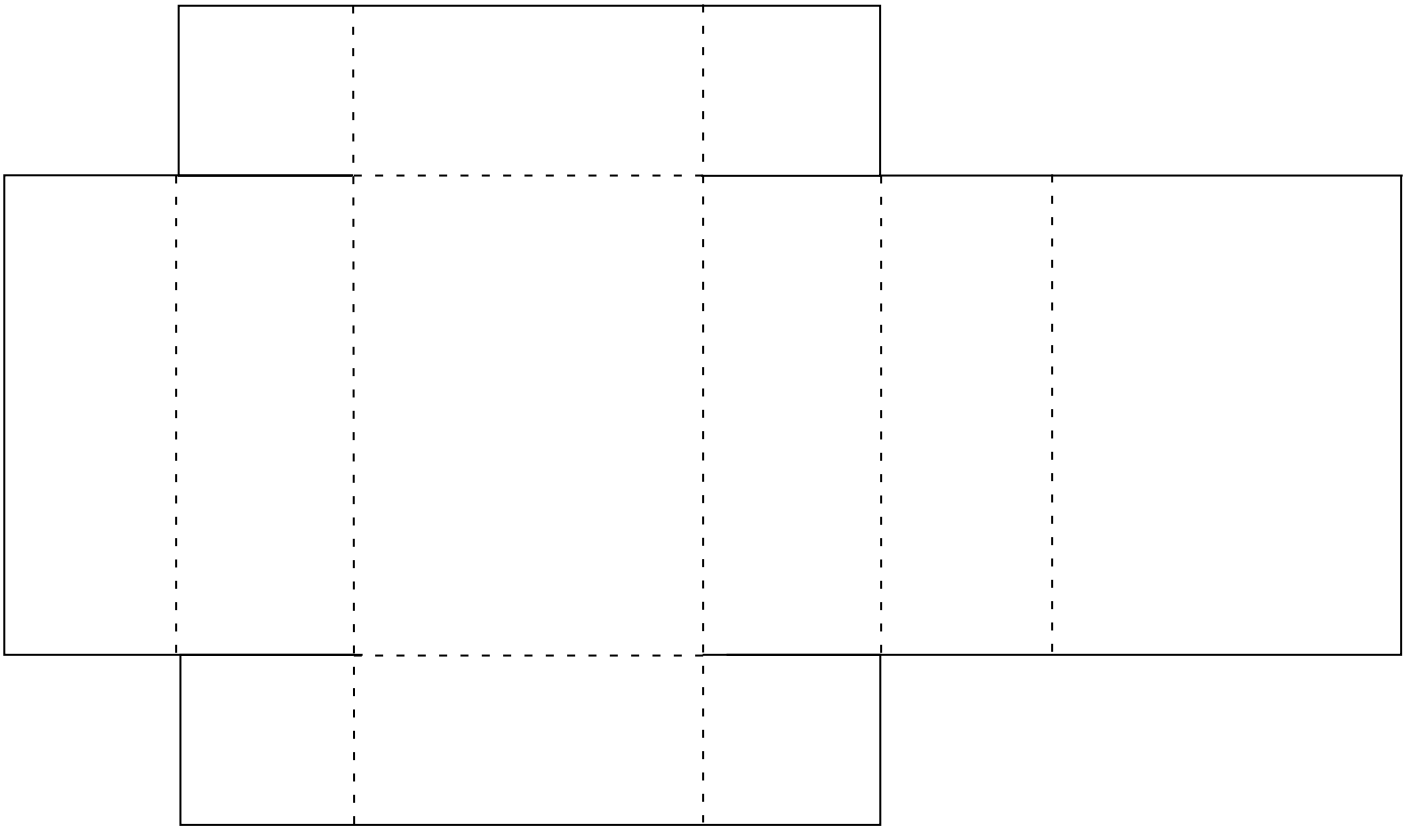
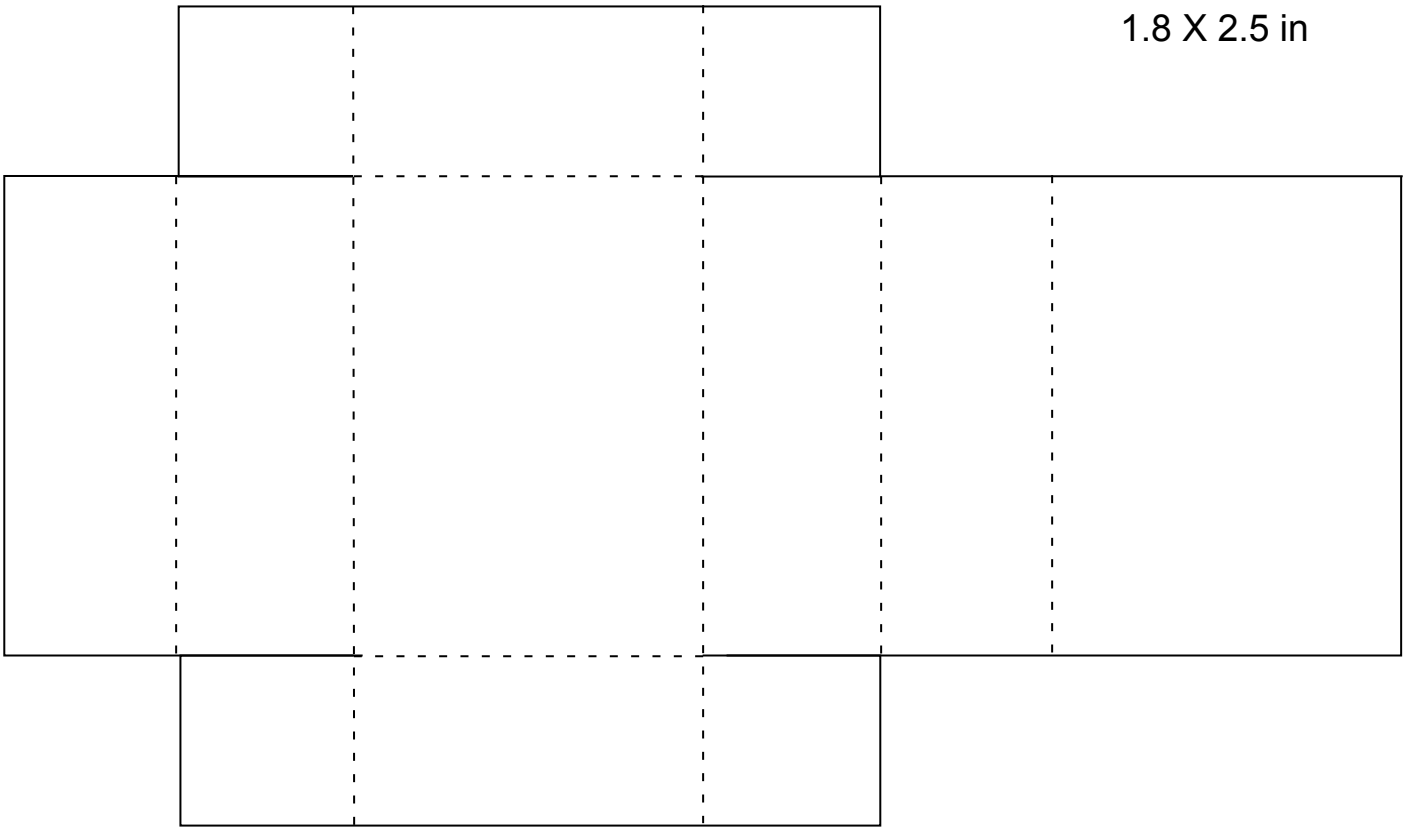
11.2 X 8.2 cm
4.4 X 3.2 in



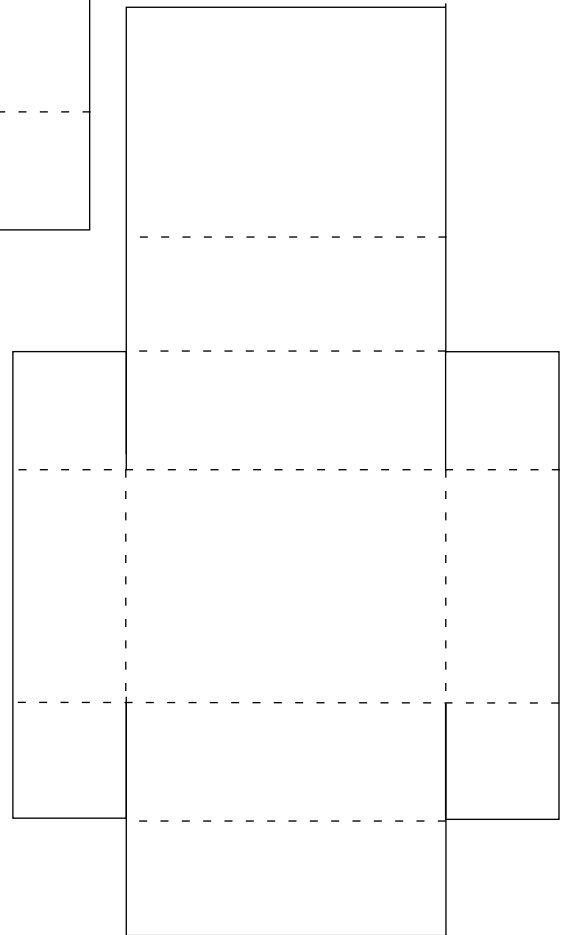
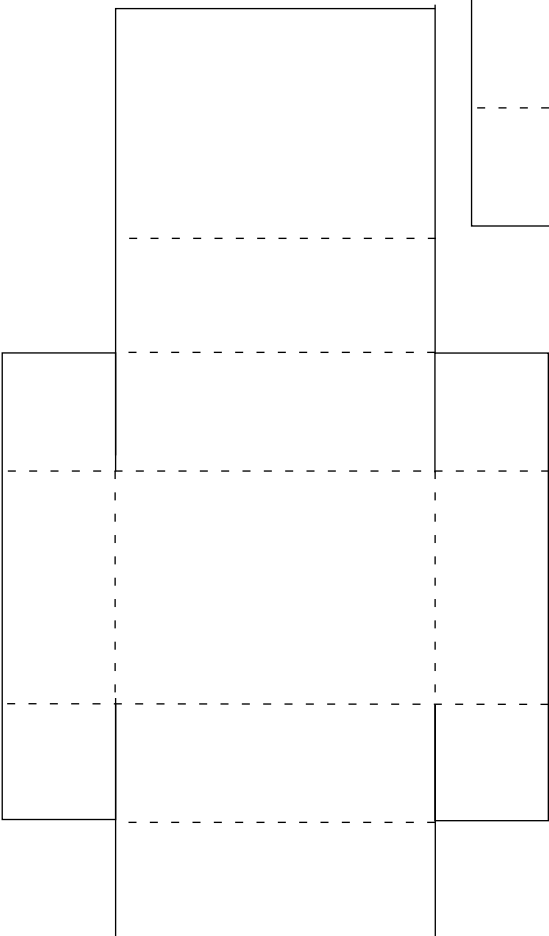
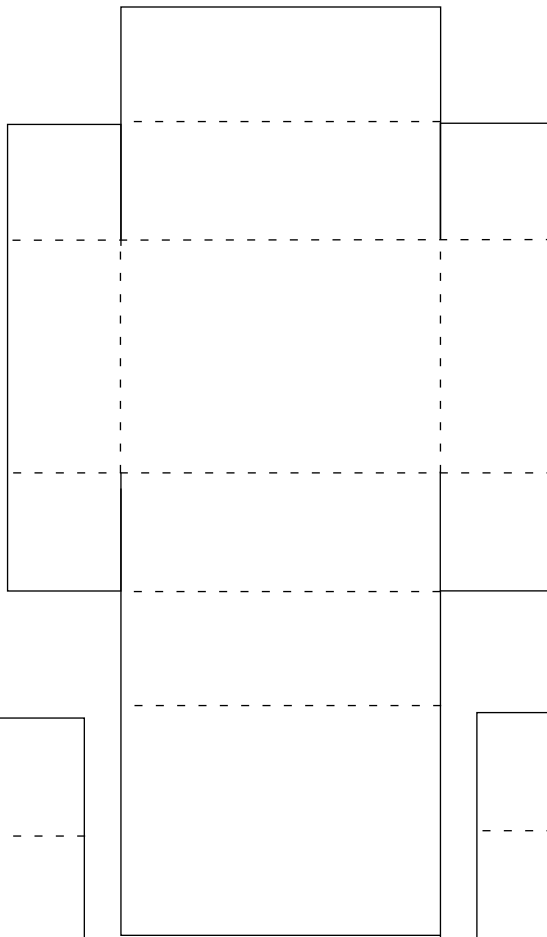
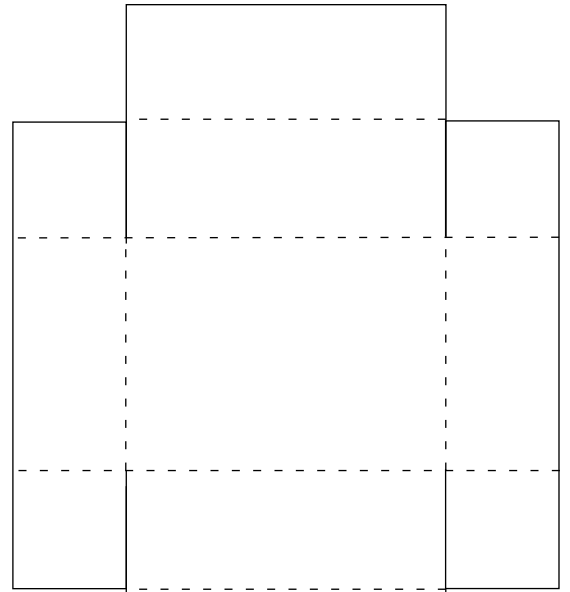
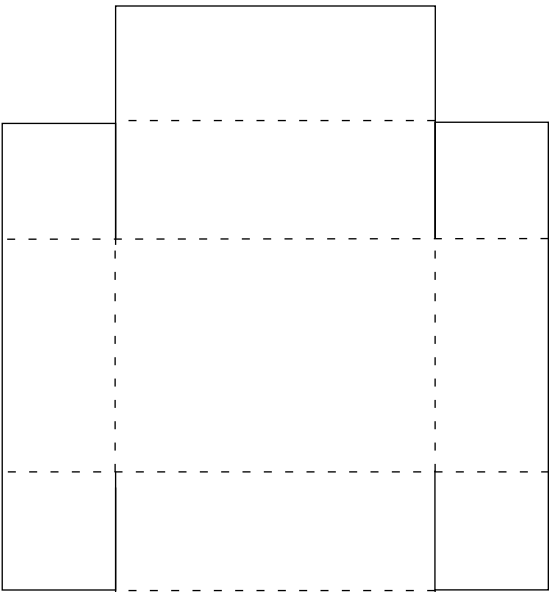
8.4 X 6.2 cm
3.3 X 2.4 in



4.6 X 6.3 cm
1.8 X 2.5 in



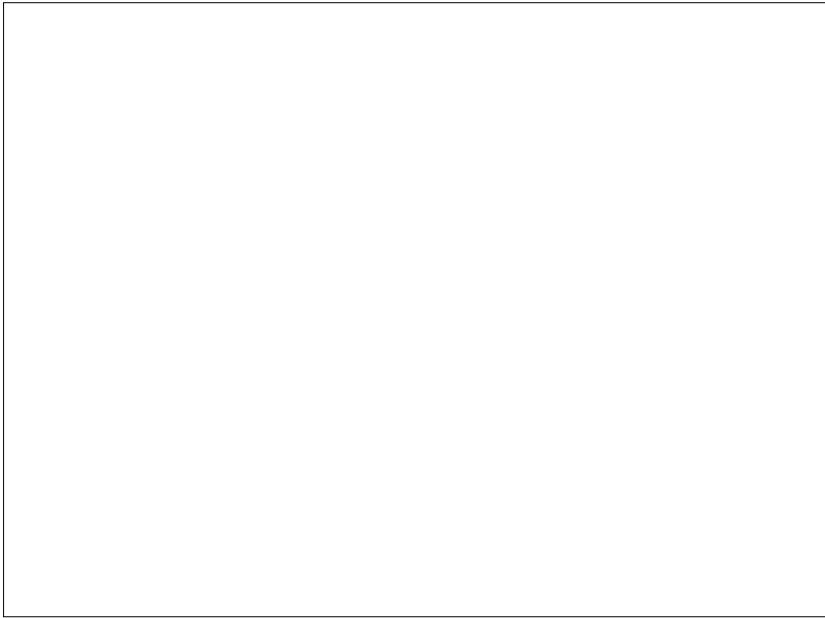
3.1 X 4.3 cm
1.2 X 1.7 in



SPECIMEN LABELS

- Copy/paste the desired label to a blank page of appropriate software (MS Word, Power-Point, Print Shop, etc.). If the pasted image isn't slightly narrower than the associated box, re-size it.
- Place desired text in upper half of label. If you need more than one label with the same text, copy/paste as many as will fit on the page; then print as many pages as needed.

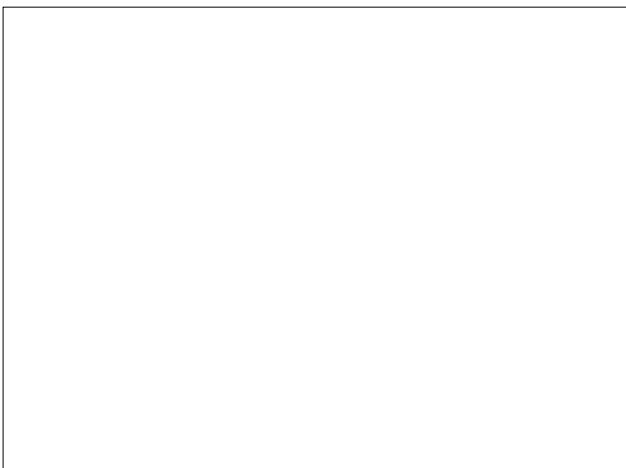
For 11.2 X 8.2 cm box



4.6 X 6.3 cm box



8.4 X 6.2 cm box



3.1 X 4.3 cm box

